

Hosted the 18th Legislative Town Hall on Disabilities

150+
attendees

brought light to issues impacting the disability community like the CMA transition, employment, and housing

We brought back the TRE Art Show!



which gave back
\$3,175
to artists, including these TRE clients

celebrated 60 years



Enterprise Zone Capital Campaign

This campaign allows us to focus on meaningful and gainful employment opportunities for the disability community.



We want to create more stories like

Scotty's

He is a valued employee of Chick-fil-A for over 10 years

By supporting this employment initiative, you can receive a

25%
tax credit

in addition to the tax deduction

13,000+ individuals served by TRE


100 new staff members hired to help

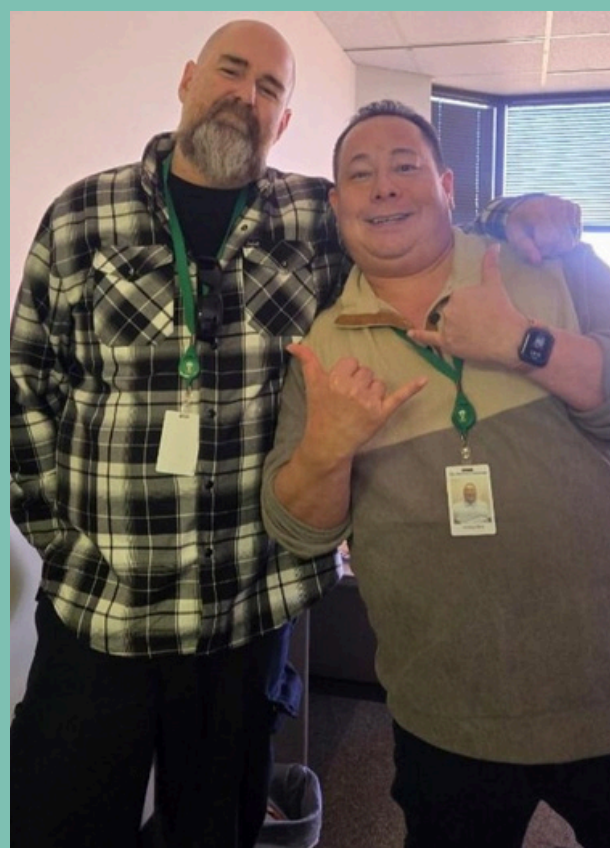
500+ total employees & **50+** at TRE for over 10 years!



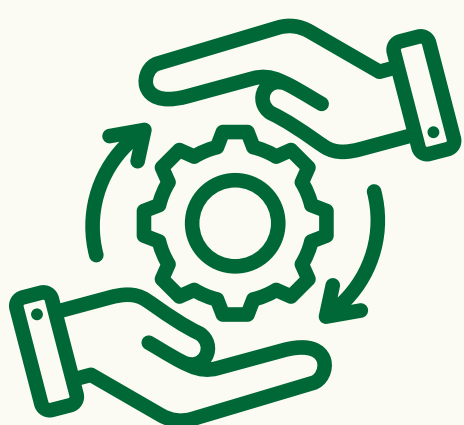
Expansion into Pueblo County

We established an office for more than 70 staff across Pueblo County

 201 W. 8th St.
Suite 600



Facing Challenges with Solutions



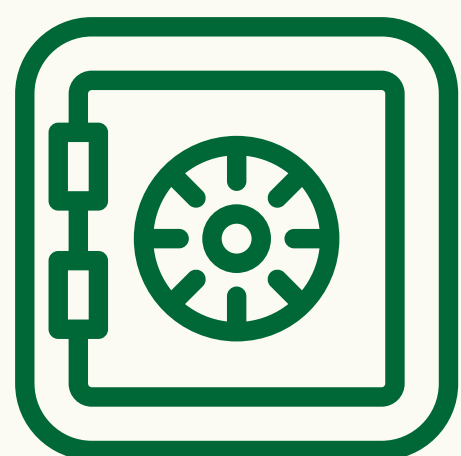
CMA Transition

Several system changes happened at the same time which led to backlogs, but our targeted backlog plan **eliminated all** backlogged activities



Staff Recruitment & Retention

We have over 90% of our positions filled, and will be continuing our focus on hiring the very **best staff** to fill vacant positions while fostering retaining staff to provide the consistency & stability that people need that when receiving services.



The Vault

We will be rolling out a portal in 2025 for people we serve to see their information and where they are in the process of accessing services. It is intended to **improve communication** and streamline access to information

Respite Programs

159 families supported with the help of

960 volunteers who completed

1800+ hours!



 (719) 380-1100

 www.tre.org



subscribe to our monthly newsletter